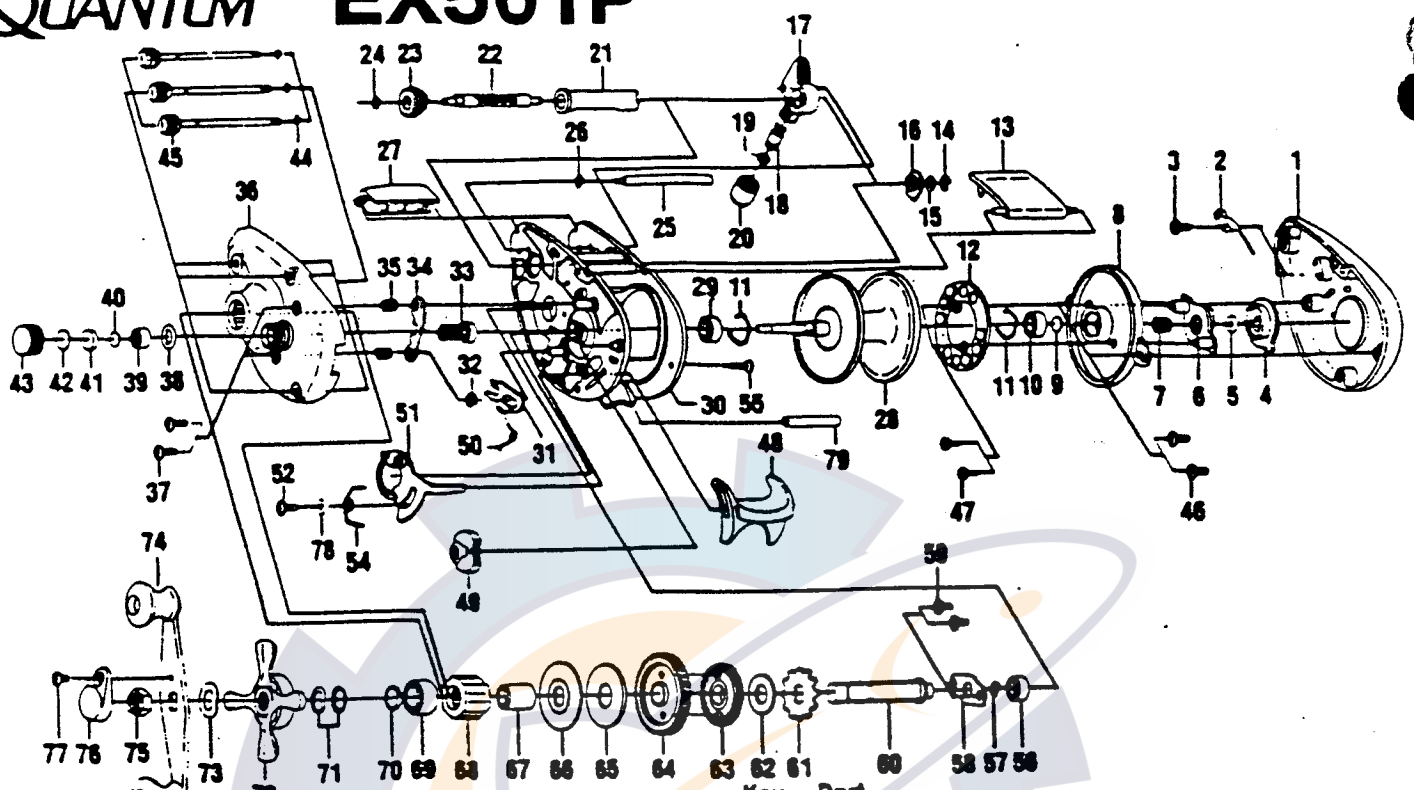


# QUANTUM EX501P



| Key No. | Part No. | Description              | Price | Key No. | Part No. | Description                 | Price |
|---------|----------|--------------------------|-------|---------|----------|-----------------------------|-------|
| 1       | XW024-2  | Right Side Cover         | 8.70  | 40      | QW032-1  | Washer - Spool Tension      | .52   |
| 2       | QW108    | Clicker                  | .93   | 41      | QW081    | Collar                      | .93   |
| 3       | QW125    | Screw - Clicker          | .93   | 42      | QW082    | Cushion Washer - Spool      | .93   |
| 4       | XW026    | Magnet Control Dial      | 1.24  | 43      | QW033    | Spool Tension Knob          | 2.83  |
| 5       | CX4250   | Dial Friction Ring       | .49   | 44      | QW073    | Ring - Thumb Screw Ret.     | 1.13  |
| 6       | QW028    | Slide Cam                | 1.13  | 45      | QW374    | Thumb Screw                 | 1.13  |
| 7       | CX4301   | Slide Cam Spring         | .36   | 46      | QW125    | Screw - Spool Cover         | .93   |
| 8       | QW051    | Spool Cover              | 2.68  | 47      | QW076    | Screw - Magnet Ring         | .62   |
| 9       | QW032-1  | Spool Tension Shim       | .52   | 48      | SW009    | Thumb Bar                   | 2.73  |
| 10      | SW017    | Bearing                  | 6.59  | 49      | XW087    | Flippin' Switch             | .93   |
| 11      | QW080    | Clip Ring                | .52   | 50      | XW097    | Spring - Kick Lever         | .62   |
| 12      | QW330    | Magnet Plate Assy.       | 5.51  | 51      | XW039    | Release Slider              | 2.16  |
| 13      | QW027-4  | Hood                     | 5.48  | 52      | QW076    | Screw Release Slider        | .62   |
| 14      | ZX4657   | E-Clip (Worm Shaft)      | .69   | 54      | XW104    | Spring - Release Slider     | .62   |
| 15      | QW035-3  | Washer (Worm Shaft)      | .62   | 55      | SW050    | Thumb Bar Retaining Screw   | .93   |
| 16      | QW067    | Worm Shaft Bushing       | .93   | 58      | QW017    | Bearing - Crankshaft        | 6.59  |
| 17      | QW347    | Line Guide Carrier       | 5.51  | 57      | CX4152   | E-Ring - Crankshaft         | .31   |
| 18      | CW006    | Line Guide Pawl          | 2.68  | 58      | QW002    | Retainer - Crankshaft       | 1.13  |
| 19      | QW035-3  | Washer (L/G Pawl)        | .62   | 59      | QW107    | Screw - Crankshaft Retainer | .93   |
| 20      | QW007    | Line Guide Carrier Screw | 2.16  | 60      | QW008    | Crankshaft                  | 5.41  |
| 21      | QW016    | Worm Shaft Guide         | 1.91  | 61      | QW083    | Trip Ratchet                | 1.70  |
| 22      | QW072    | Worm Shaft               | 6.95  | 62      | QW111    | Washer                      | .62   |
| 23      | CW085    | Level Wind Gear          | 1.70  | 63      | QW112    | Gear - L/W Idler            | 1.49  |
| 24      | VX4243   | E-Ring (L/W Gear)        | .62   | 64      | SW012-2  | Drive Gear                  | 10.56 |
| 25      | QW061    | Stabilizer Bar           | 2.58  | 65      | QW059    | Drag Disc                   | 2.94  |
| 26      | VX4243   | E-Ring (Stabilizer Bar)  | .62   | 66      | QW045    | Drag Washer                 | 1.24  |
| 27      | SW099    | Front Support            | 3.24  | 67      | QW052    | Clutch Sleeve               | 3.19  |
| 28      | QW321-2  | Spool Assy.              | 14.42 | 68      | QW063    | Anti-Reverse Clutch         | 10.56 |
| 29      | SW017    | Bearing                  | 6.59  | 69      | TW058    | Bearing - Crankshaft Top    | 6.70  |
| 30      | XW001    | Frame                    | 8.45  | 70      | QW035    | Washer - Crankshaft         | 1.49  |
| 31      | SW077-2  | Kick Lever               | 1.49  | 71      | CX4662   | Spring "D" Washer           | .36   |
| 32      | CX4152   | E-Ring (Kick Lever)      | .31   | 72      | QW055-2  | Drag Star                   | 2.73  |
| 33      | SW311-2  | Pinion Gear              | 9.79  | 73      | CX4660   | Handle Washer               | .36   |
| 34      | XW025    | Pinion Yoke              | 2.11  | 74      | QW318    | Handle Assy.                | 8.57  |
| 35      | QW040    | Spring-Pinion Yoke       | .93   | 75      | QW003-2  | Handle Nut                  | 1.60  |
| 36      | XW023-2  | Left Side Cover          | 8.24  | 76      | QW034    | Handle Nut Cap              | .93   |
| 37      | QW053-1  | Screw (Lft. Side Cover)  | .93   | 77      | QW123    | Handle Nut Cap Screw        | .93   |
| 38      | CX4258   | Tension Knob Ring        | .36   | 78      | SW121    | Washer - Release Slider     | .62   |
| 39      | QW117    | Bearing                  | 8.45  | 79      | SW094    | Spacer                      | .46   |

Prices subject to change without notice. Prices do not include postage and handling.

**PLEASE ORDER BY PART NUMBER**

Rev. 5/93

Zebco Division Brunswick Corporation, Box 270, Tulsa, OK 74101 USA 918-836-5581

